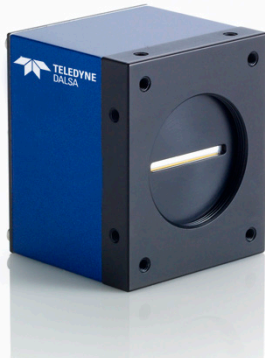


Spyder3 GigE Vision SG-14

Dual Line Scan Monochrome Cameras



A high sensitivity dual line scan camera supporting a GigE Vision Ethernet interface

The Spyder3 SG-14 GigE Vision (GEV) camera is our latest GigE camera. The GEV interface eliminates the need for a frame grabber, resulting in significant system cost savings. When operating in high sensitivity (dual line scan) mode the Spyder3 GEV has 3x the responsivity of the Spyder2 line scan camera. At its core is the CCD dual line scan technology that achieves unprecedented responsivity.

The Spyder3 GEV is supported by SaperalT and fully programmable, offering precise control over key performance variables such as gain and offset.

Key Features

- Responsivity up to 2064 DN / (nJ/cm²) @ 0dB gain, 12 bit
- GigE Vision interface
- High or low speed (40 or 80 MHz)
- Line rates up to 68 kHz
- Data transmission up to 100 m
- Supported by SaperalT

Programmability

- Graphical user interface
- Programmable gain, offset, exposure, line rates, trigger mode, and camera diagnostics
- Selectable high or low sensitivity mode
- Flat-field correction

Typical Applications

- FPD inspection
- Pick-and-place
- Container inspection
- Wood / tile / steel inspection
- 100 % print inspection
- Postal sorting
- Glass bottle inspection
- Industrial metrology
- Food inspection
- Web inspection

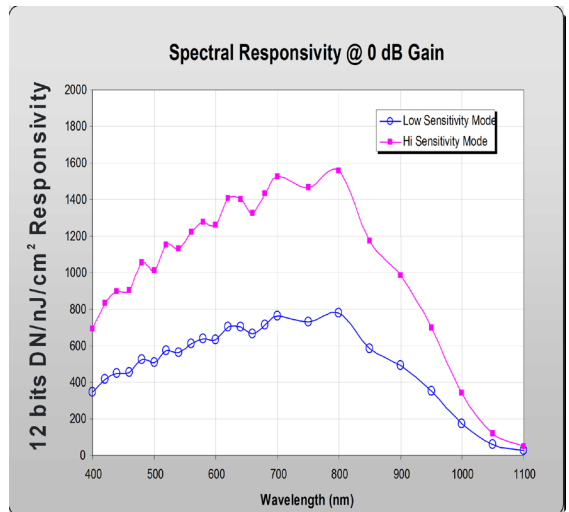
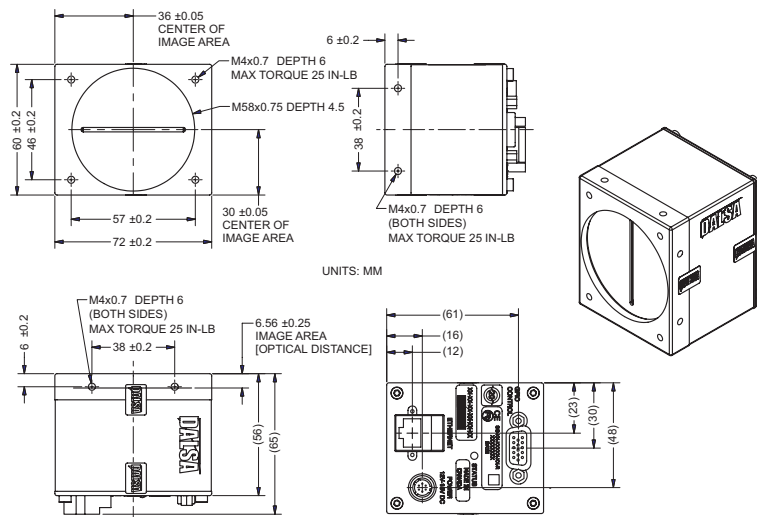
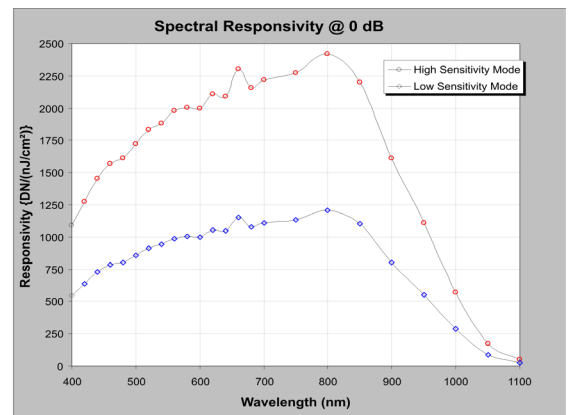
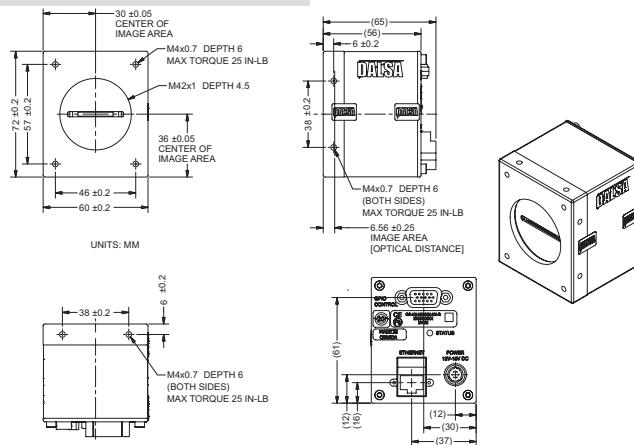
Specifications

Resolution	1024 / 2048 / 4096 x 2 pixels
Data Rate	40 or 80 MHz (1k and 2k) 80 MHz (4k)
Max. Line Rate	68 / 36 / 18 kHz
Pixel Size	14 μ m x 14 μ m (1k and 2k) 10 μ m x 10 μ m (4k)
Data Format	8 or 12 bit, user selectable
Output	Gigabit Ethernet
Lens Mount	M42 x 1, C and F (1k and 2k) M58 x 0.75, F (4k)
Responsivity	Up to 2064 DN / (nJ/cm ²) @ 0 dB, 12 bit
Dynamic Range	Up to 1400 : 1
Nominal Gain Range	\pm 10 dB
Size	72 mm x 60 mm x 65 mm , all models
Mass	< 300 g
Operating Temp	0 °C to 65 °C (New!)
Power Supply	+12 V to +15 V
Power Dissipation	< 9 W
Regulatory Compliance	CE, RoHS
Control	RJ-45, 15-pin mini-DSUB
Data	RJ-45
Power	Hirose 6-pin
Example Part Number	SG-14-02K80-00-R

Spyder3 GigE Vision SG-14

Dual Line Scan Monochrome Cameras

The Spyder3 GigE Vision sports 3x the responsivity of the Spyder2 while maintaining the same dynamic range. The GigE interface eliminates the frame grabber, reducing system costs.



www.teledynedalsa.com

Americas

Boston, USA
+1 978-670-2000
sales.americas@teledynedalsa.com

Europe

Krailling, Germany
+49 89-89-54-57-3-80
sales.europe@teledynedalsa.com

Asia Pacific

Tokyo, Japan
+81 3-5960-6353
sales.asia@teledynedalsa.com

Shanghai, China
+86 21-3368-0027
sales.asia@teledynedalsa.com

Teledyne DALSA has its corporate offices in Waterloo, Canada
Teledyne DALSA reserves the right to make changes at any time without notice. Teledyne DALSA © 2012.
Revision number 03-070-20055-01. Revision date 10 October 2012.

